

The Four Seasons



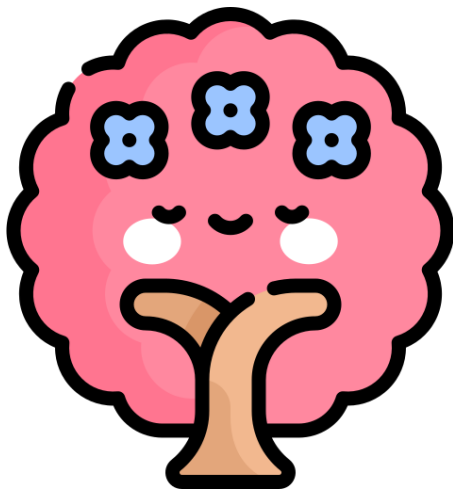
AUTUMN

The weather is cool.
Plants slow down their growth.
The days get shorter.
The leaves fall down.



WINTER

The weather is cold.
Plants stop growing.
The days are very short.
Many trees don't have leaves.



SPRING

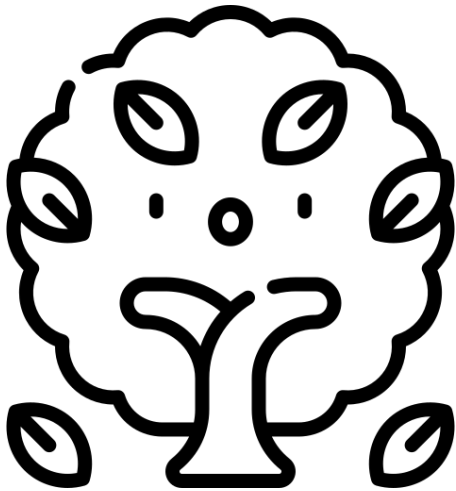
The weather is warm.
Plants begin to grow.
The days get longer.
Some trees bloom.



SUMMER

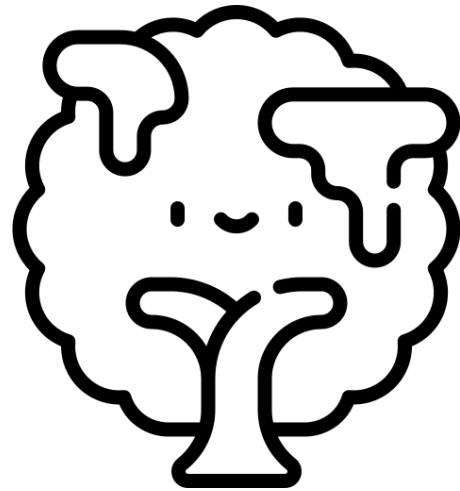
The weather is hot.
Plants keep growing.
The days are very long.
Some trees bear fruit.

The Four Seasons



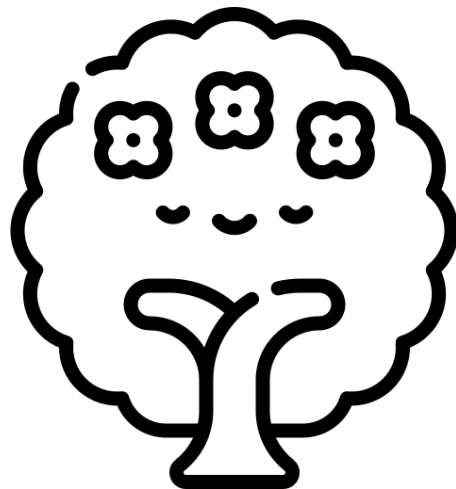
AUTUMN

The weather is cool.
Plants slow down their growth.
The days get shorter.
The leaves fall down.



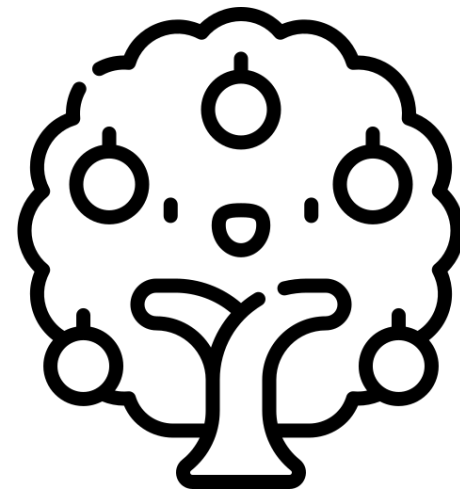
WINTER

The weather is cold.
Plants stop growing.
The days are very short.
Many trees don't have leaves.



SPRING

The weather is warm.
Plants begin to grow.
The days get longer.
Some trees bloom.



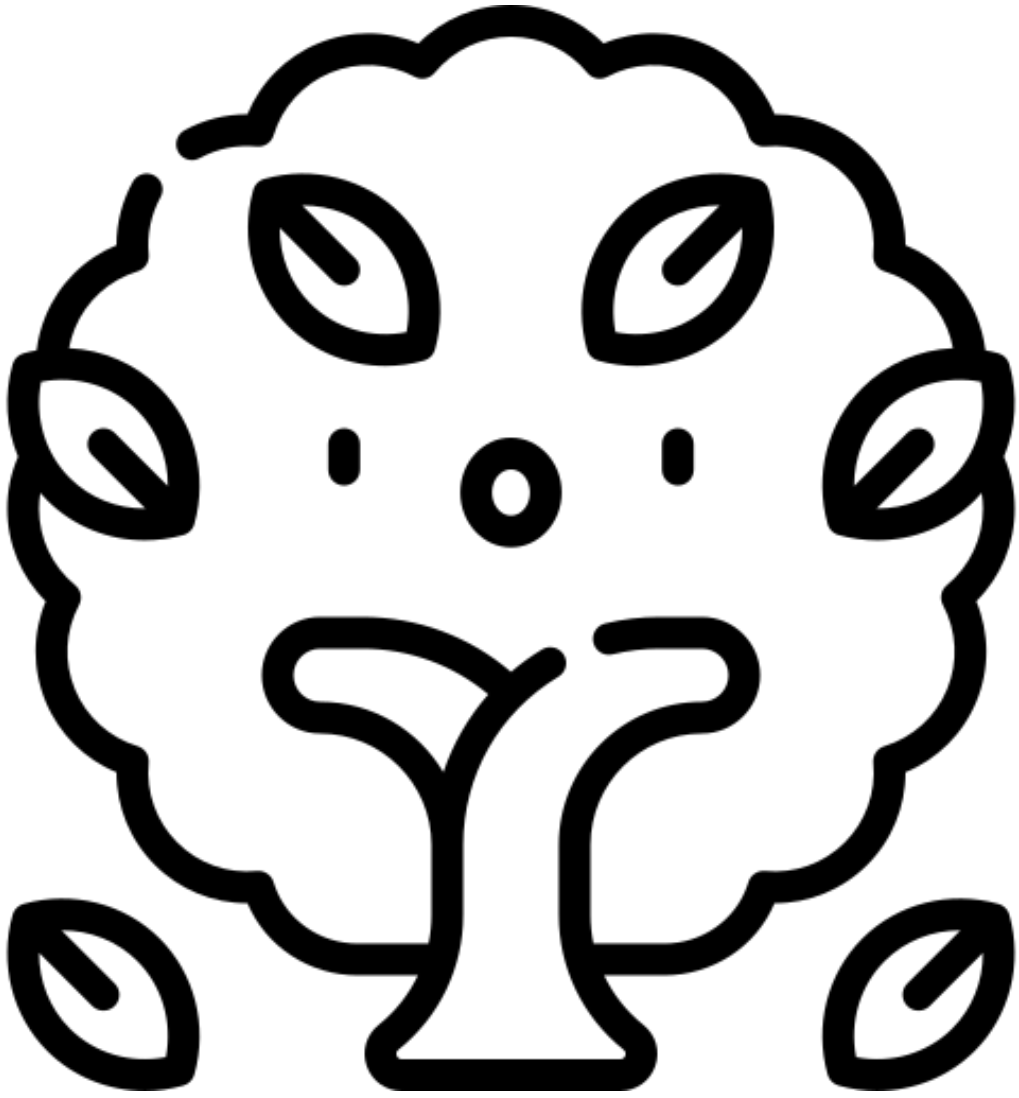
SUMMER

The weather is hot.
Plants keep growing.
The days are very long.
Some trees bear fruit.



AUTUMN

The weather is cool.
Plants slow down their growth.
The days get shorter.
The leaves fall down.



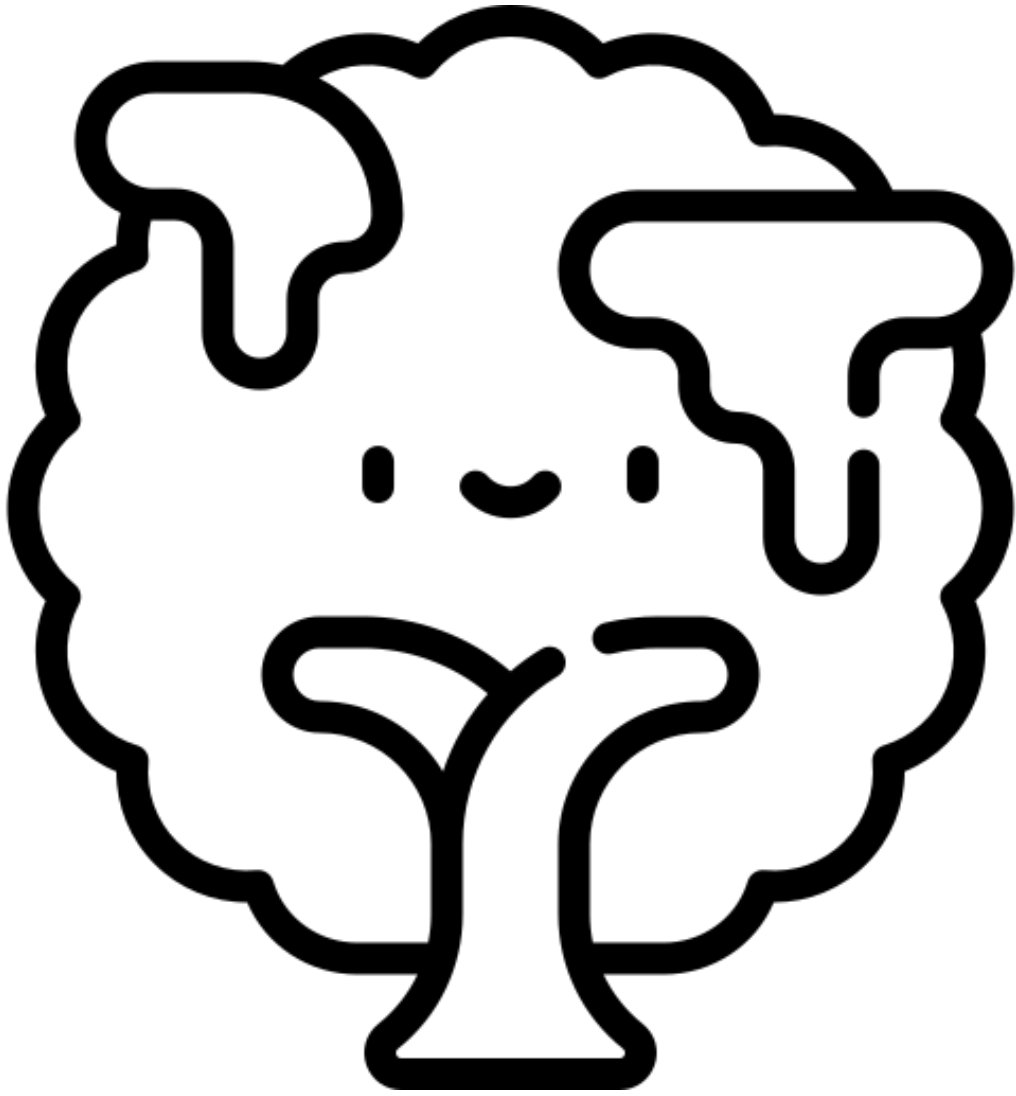
AUTUMN

The weather is cool.
Plants slow down their growth.
The days get shorter.
The leaves fall down.



WINTER

The weather is cold.
Plants stop growing.
The days are very short.
Many trees don't have leaves.



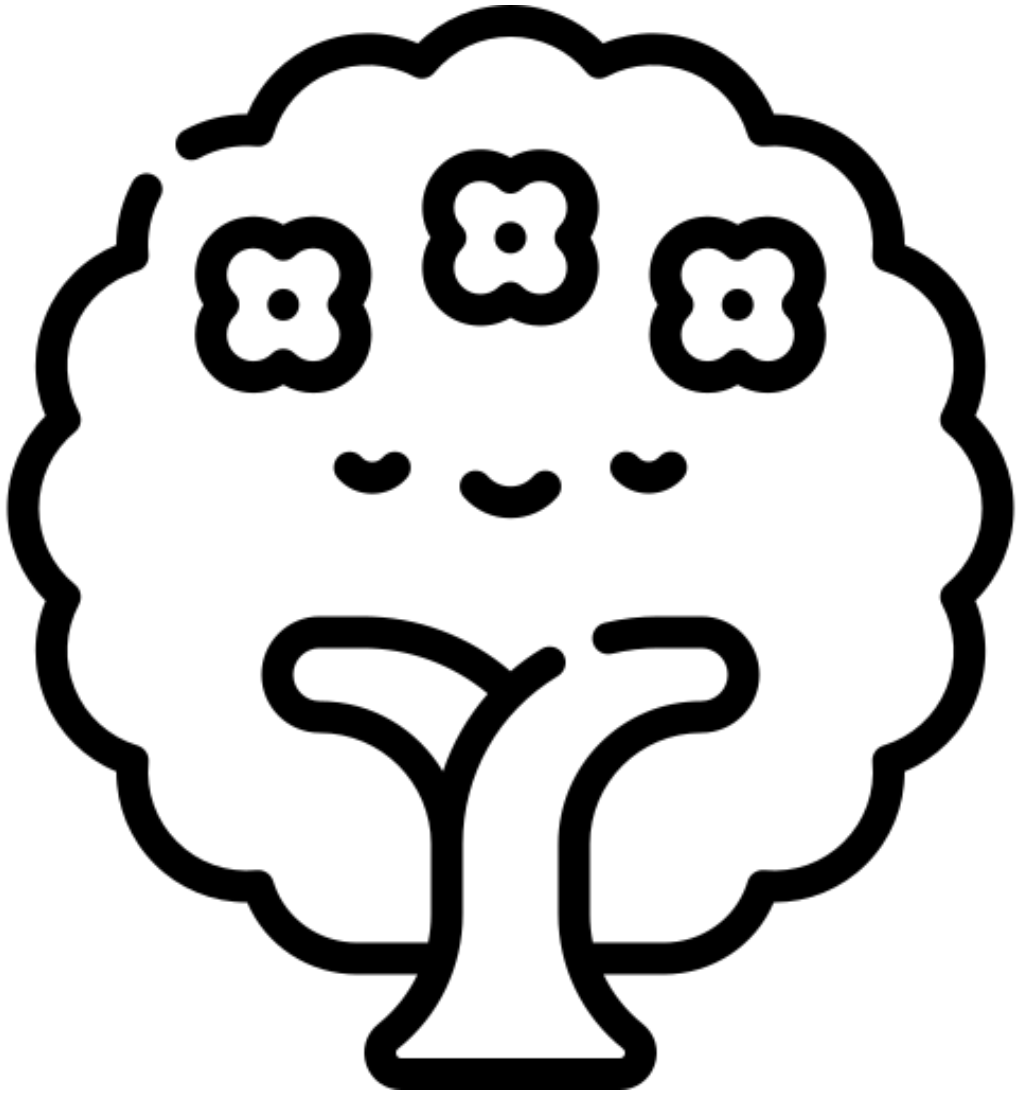
WINTER

The weather is cold.
Plants stop growing.
The days are very short.
Many trees don't have leaves.



SPRING

The weather is warm.
Plants begin to grow.
The days get longer.
Some trees bloom.



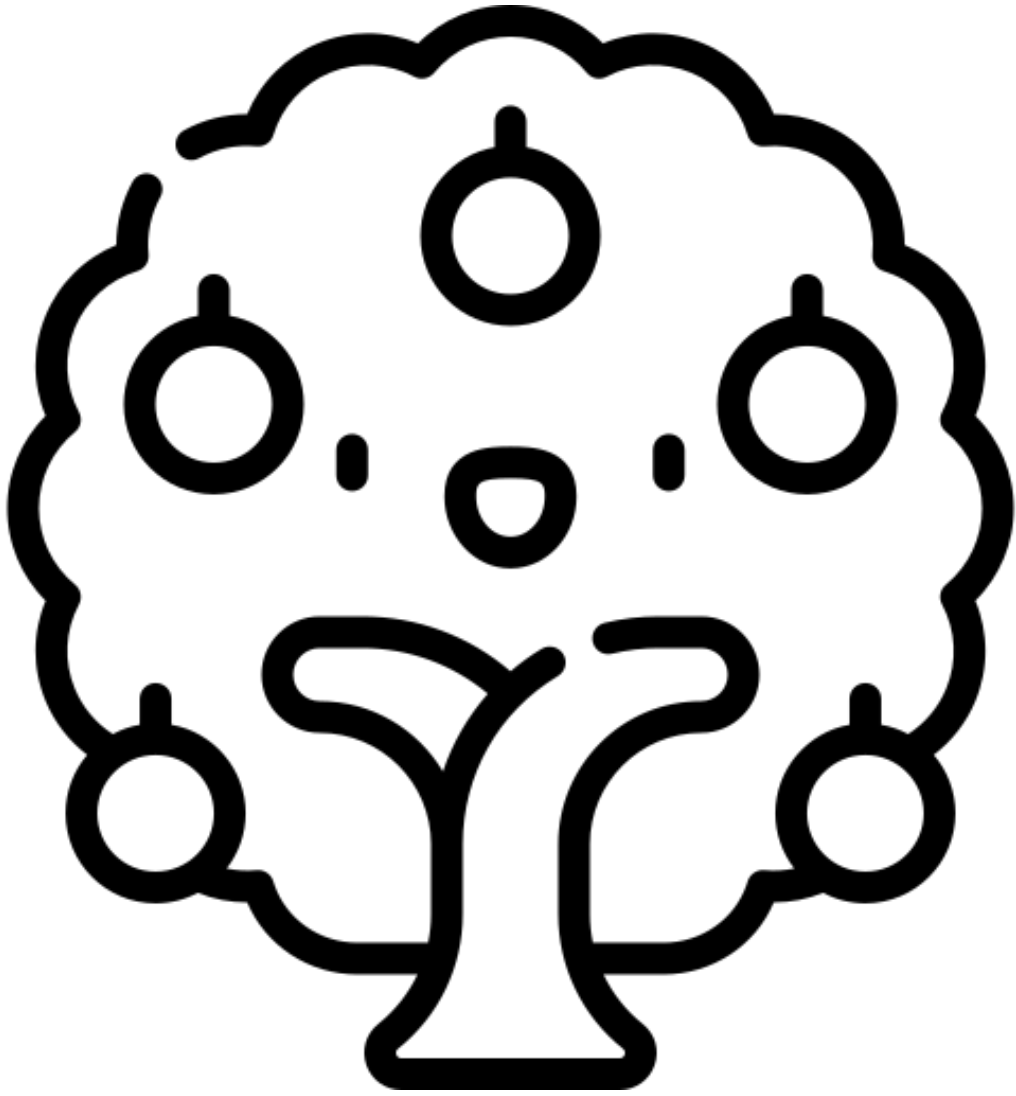
SPRING

The weather is warm.
Plants begin to grow.
The days get longer.
Some trees bloom.



SUMMER

The weather is hot.
Plants keep growing.
The days are very long.
Some trees bear fruit.



SUMMER

The weather is hot.
Plants keep growing.
The days are very long.
Some trees bear fruit.